






PLASMA MOUNT INSTALLATION AND OPERATION INSTRUCTIONS

Warning Statements

Warning	The wall structure must be capable of supporting at least a maximum weight of 81.6kg (180lbs) for 37"-60" televisions and 56kg (123lbs) for 25"-37" televisions. If not, the wall must be reinforced. Proper installation procedure by a qualified service technician, as outlined in the installation instructions, must be adhered to. Failure to do so could result in serious personal injury, or even death.
Warning	Safety measures must be practiced at all times during the installation of this product. Use proper safety gear and tools for the installation procedure to prevent personal injury.
Warning	Prior to the installation of this product, the installation instructions should be read and completely understood. The installation instructions must be read to prevent personal injury and property damage. Keep these installation instructions in an easily accessible location for future reference.
	A secure structure must support the weight or load of the display, When mounting to a wall that contains wooden studs, dead center of the wooden stud must be confirmed prior to installation.
	Do not install on a structure that is prone to vibration, movement or chance of impact. Failure to do so could result in damage to the display and/or damage to the mounting surface.
	Do not install near heater, fireplace, direct sunlight, air conditioning or any other source of direct heat energy. Failure to do so may result in damage to the display and could increase the risk of fire.
	At least two qualified people should perform the installation procedure. Injury and/or damage can result from dropping or mishandling the display.
	Recommended mounting surfaces: wooden studs and solid-flat concrete. If the mount is to be installed on any surface other than wooden studs, use suitable hardware (which is commercially available).

Hardware kit:

Bag 1	(x4) M4x12 Bolt (x4) M4x30 Bolt (x4) M4 Lock Washer	Bag 4	(x4) M8x16 Bolt (x4) M8x40 Bolt (x4) M8 Lock Washer
Bag 2	(x4) M5x12 Bolt (x4) M5x30 Bolt (x4) M5 Lock Washer	Bag 5	(x4) M4/M5 Spacer (x4) M6/M8 Spacer (x4) M4/M5 Washer
Bag 3	(x4) M6x12 Bolt (x4) M6x35 Bolt (x4) M6 Lock Washer	Bag 6	(x1) Bubble Level System (x6)M8x60 Lag Bolt (x6) Washer (x6) Concret anchor

Tools Required:

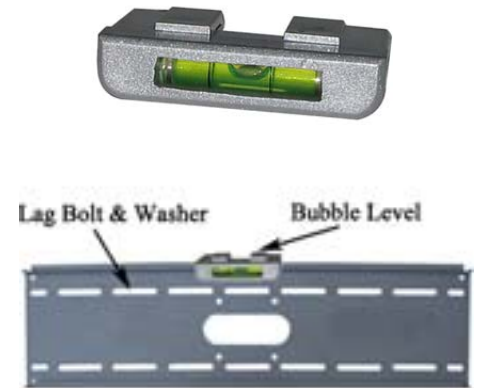
<ul style="list-style-type: none"> ✓ Phillips Head Screw driver ✓ Stud finder for drywall installation ✓ 5/16" Socket and Wrench ✓ Electric drill and 3/8" (10mm) masonry bit for concrete/brick installation

Note: You need to put the bubble level system on the pipe when you install the wall plate and take it away after you finish installation.

Wood Stud Installation

For secure wood stud mounting, the wall plate must be mounted to two studs at least 12" apart.

1. Use a high-quality electronic stud finder (commercially available) to locate two adjacent studs and mark their locations with a pencil.
2. With the help of an assistant, and using the bubble level to ensure the wall plate is level, position the wall plate against the wall in the desired mounting location.
3. Mark the right, upper and lower and the left (upper and lower), positions of the small horizontal slots that are in alignment with the studs.
4. You should mark four positions total.
5. Next, pre-drill a 10mm hole in the wall stud at each marked location.
6. With the help of an assistant, position the wall plate against the wall and line up the mounting slots with drilled holes.
7. For each location, insert a lag bolt and washer into the wall.



8. Tighten bolt with an open ended socket wrench by turning clockwise until tight.
CAUTION: Do not over-tighten bolts-doing so may cause unnecessary damage to the wall. Avoid excessive torque.

CAUTION: Do not release the wall plate until it is properly mounted and secured to the wall.

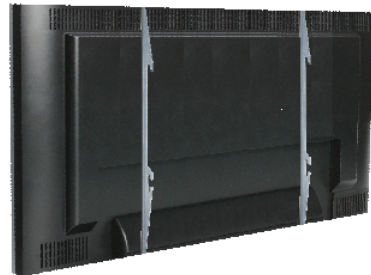
Concrete/Brick Installation

NOTE: The concrete anchors must be used for concrete installation. They can be purchased at your local hardware store.

1. Begin by placing the wall plate into position against the wall, using the bubble level to keep it level.
2. Mark off four holes to be used for securing the mount and place the wall plate aside.
3. Next, drill holes using an electric drill and 10mm masonry bit.
4. Insert a concrete anchor into each hole.
5. If necessary, a hammer can be used to lightly tap each anchor into place so that they are flush with the wall.
6. Once all of the anchors are in place, move the wall plate back into position.
7. Attach the lag bolt into the anchor that is placed in the wall.
8. Do not tighten until all nuts are in place.

Display Bracket Installation

1. To ensure optimal installation, this kit includes various screws of different diameters and lengths.
2. Place your TV screen down on a soft, flat surface, and locate the threaded mounting points that are located on the back of the display.
3. Determine which screw is the correct length by carefully inserting a straw, or toothpick, and mark how deep the mounting point is.
4. If your display has a curved back or a recessed thread mounting point, a spacer must be used.



NOTE: Select the spacer that is closest in depth to the recess to keep your bracket as close to the display as possible.

5. Place the spacer between the mounting bracket and the display.
6. If a smaller screw is being used(M4,M5 or M6), please use a washer with each screw for added stability

Final Installation

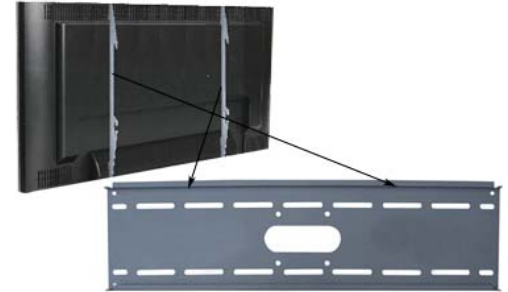
Attach each bracket to the display by aligning the holes on each bracket, with the threaded inserts on the back panel of your display, inserting the screws through both and turning clockwise until they are fully inserted.

1. Tighten with a Phillips head screw driver.

CAUTION: Two people are required for this step.

2. To complete the installation of your new plasma mount, carefully place the television brackets over the upper and lower mounting crossbars.

3. Making sure that the safety-bar is not in place when placing the television on the mount



For additional security, you can install the safety-bar that is included with your mount. The safety bar can be inserted from either side of the mount. It should pass through the interspace of the lower part of the two TV brackets.



You can also attach a padlock (not included) to the end of the safety-bar to prevent unwanted removal of your TV from the mount.

